

ER

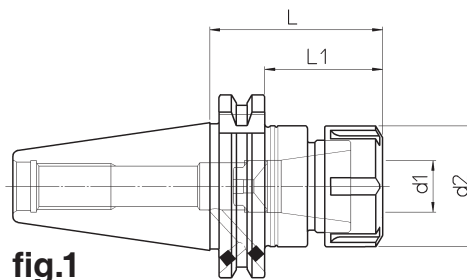


fig.1

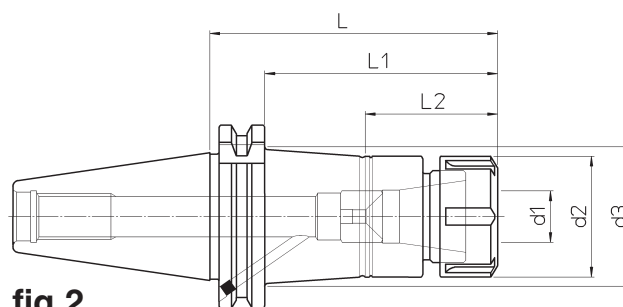


fig.2

Supplied without collets and clamping wrenches

Ohne Spannzangen und Spannschlüssel

Поставляется без цанг и зажимного ключа

Nie zawiera tulejek rozprężnych i kluczy do nakrętek

Pinze elastiche e chiavi di serraggio escluse

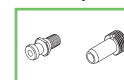
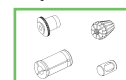
DIN	REF.	CODE	TYPE	d ₁	d ₂	d ₃	L	L ₁	L ₂	kg	fig.
40	DIN69871-AD+B40 ER16.60	71DIN-B40ER1606	ER 16 M	0.5 ~ 10	22	-	60	41	-	0.9	1
	DIN69871-AD+B40 ER16.100	71DIN-B40ER1610				29.5	100	81	41	1	2
	DIN69871-AD+B40 ER16.160	71DIN-B40ER1616				38	160	141	41	2	2
	DIN69871-AD+B40 ER25.60	71DIN-B40ER2506	ER 25	1 ~ 16	42	-	60	41	-	1.1	1
	DIN69871-AD+B40 ER25.100	71DIN-B40ER2510				47	100	81	46	1.6	2
	DIN69871-AD+B40 ER25.160	71DIN-B40ER2516				50	160	141	46	2.1	2
	DIN69871-AD+B40 ER32.70	71DIN-B40ER3207	ER 32	2 ~ 20	50	-	70	51	-	1.2	1
	DIN69871-AD+B40 ER32.110	71DIN-B40ER3211					110	91		1.7	
	DIN69871-AD+B40 ER32.160	71DIN-B40ER3216					160	141		2.7	
	DIN69871-AD+B40 ER40.80	71DIN-B40ER4008	ER 40	3 ~ 26	63	-	80	61	-	1.3	1
	DIN69871-AD+B40 ER40.120	71DIN-B40ER4012					120	101		2.3	
	DIN69871-AD+B40 ER40.160	71DIN-B40ER4016					160	141		3.3	

p. 270

p. 240

p. 230-233

p. 228



ER

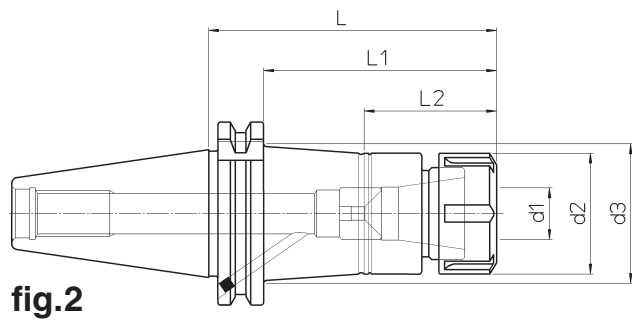
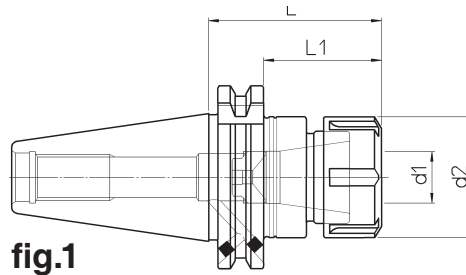


fig.1

fig.2

Supplied without collets and clamping wrenches

Ohne Spannzangen und Spannschlüssel

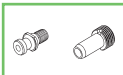
Поставляется без цанг и зажимного ключа

Nie zawiera tulejek rozprężnych i kluczy do nakrętek

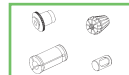
Pinze elastiche e chiavi di serraggio escluse

DIN	REF.	CODE	TYPE	d ₁	d ₂	d ₃	L	L ₁	L ₂	kg	fig.
50	DIN69871-AD+B50 ER16.100	71DIN-B50ER1610	ER 16 M	0.5 ~ 10	22	29.5	100	81	41	2.5	2
	DIN69871-AD+B50 ER16.160	71DIN-B50ER1616				32.5	160	141		3.3	
	DIN69871-AD+B50 ER25.70	71DIN-B50ER2507	ER 25	1 ~ 16	42	—	70	51	—	2.5	1
	DIN69871-AD+B50 ER25.110	71DIN-B50ER2511				48	110	91	46	2.8	2
	DIN69871-AD+B50 ER25.160	71DIN-B50ER2516				50	160	141		3.6	
	DIN69871-AD+B50 ER32.70	71DIN-B50ER3207	ER 32	2 ~ 20	50	—	70	51	—	2.9	1
	DIN69871-AD+B50 ER32.110	71DIN-B50ER3211				55	110	91	52	3.4	2
	DIN69871-AD+B50 ER32.160	71DIN-B50ER3216				57.5	160	141		4	
	DIN69871-AD+B50 ER40.100	71DIN-B50ER4010	ER 40	3 ~ 26	63	65	100	81	55	3.8	
DIN69871-AD+B50 ER40.160	71DIN-B50ER4016	70				160	141	4.3			

p. 228



p. 230-233



p. 240



p. 270



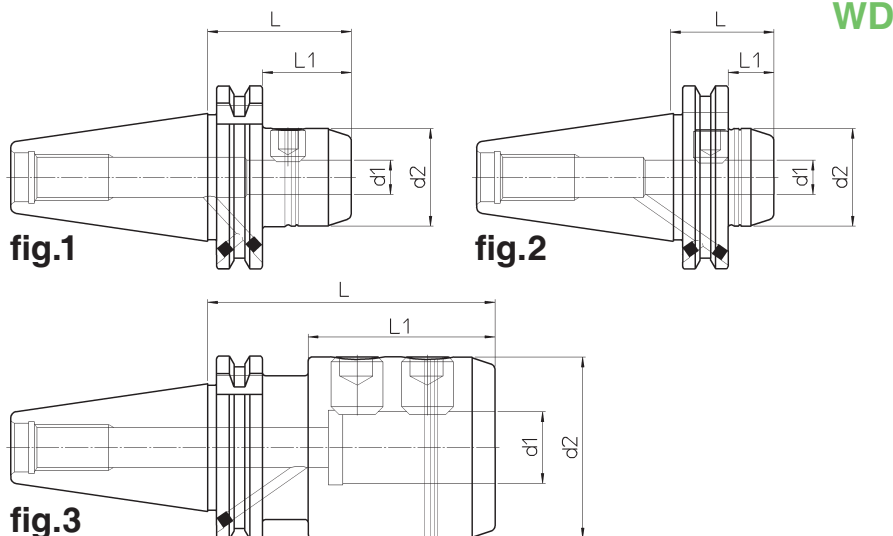
Weldon
toolholder

Werkzeugaufnahme
für Weldon

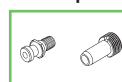
Патроны для инструмента с
креплением Weldon

Wyjście pod Weldon

Portautensile
Weldon



DIN	REF.	CODE	d ₁ H ⁵	d ₂	L	L ₁	kg	fig.
40	DIN69871-AD+B40 WD06.50	71DIN-B40WD0605	6	23	50	31	0.8	1
	DIN69871-AD+B40 WD06.110	71DIN-B40WD0611			110	91	1	
	DIN69871-AD+B40 WD06.160	71DIN-B40WD0616			160	141	1.1	
	DIN69871-AD+B40 WD08.50	71DIN-B40WD0805	8	26	50	31	0.9	
	DIN69871-AD+B40 WD08.110	71DIN-B40WD0811			110	91	1.1	
	DIN69871-AD+B40 WD08.160	71DIN-B40WD0816			160	141	1.3	
	DIN69871-AD+B40 WD10.50	71DIN-B40WD1005	10	30	50	31	1	
	DIN69871-AD+B40 WD10.110	71DIN-B40WD1011			110	91	1.4	
	DIN69871-AD+B40 WD10.160	71DIN-B40WD1016			160	141	1.6	
	DIN69871-AD+B40 WD12.35	71DIN-B40WD1203	12	34	35	16	1	2
	DIN69871-AD+B40 WD12.50	71DIN-B40WD1205			50	31	1.1	
	DIN69871-AD+B40 WD12.110	71DIN-B40WD1211			110	91	1.4	
	DIN69871-AD+B40 WD12.160	71DIN-B40WD1216			160	141	1.7	1
	DIN69871-AD+B40 WD14.50	71DIN-B40WD1405	14	38	50	31	1.2	
	DIN69871-AD+B40 WD14.110	71DIN-B40WD1411			110	91	1.6	
	DIN69871-AD+B40 WD16.35	71DIN-B40WD1603	16	42	35	16	1.1	2
	DIN69871-AD+B40 WD16.63	71DIN-B40WD1606			63	44	1.3	
	DIN69871-AD+B40 WD16.110	71DIN-B40WD1611			110	91	1.7	
	DIN69871-AD+B40 WD16.160	71DIN-B40WD1616			160	141	2.2	1
	DIN69871-AD+B40 WD18.63	71DIN-B40WD1806	18	46	63	44	1.4	
	DIN69871-AD+B40 WD18.110	71DIN-B40WD1811			110	91	1.9	
	DIN69871-AD+B40 WD20.35	71DIN-B40WD2003	20	50	44	35	1.2	2
	DIN69871-AD+B40 WD20.63	71DIN-B40WD2006			63	44	1.5	
	DIN69871-AD+B40 WD20.110	71DIN-B40WD2011			110	91	2.1	1
DIN69871-AD+B40 WD20.160	71DIN-B40WD2016	160			141	2.6		
DIN69871-AD+B40 WD25.35	71DIN-B40WD2503	25	63	44	35	1.3	2	
DIN69871-AD+B40 WD25.100	71DIN-B40WD2510			100	65	2		
DIN69871-AD+B40 WD25.160	71DIN-B40WD2516			160	125	3.2	3	
DIN69871-AD+B40 WD32.100	71DIN-B40WD3210	32	70	100	65	2.5		
DIN69871-AD+B40 WD32.160	71DIN-B40WD3216			160	125	3.9		



Weldon
toolholder

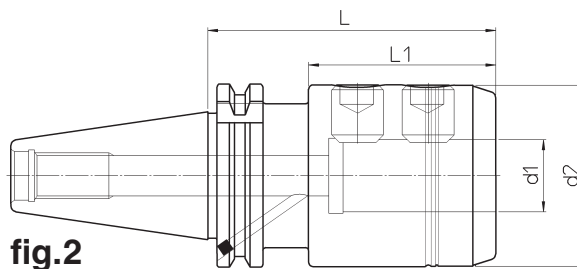
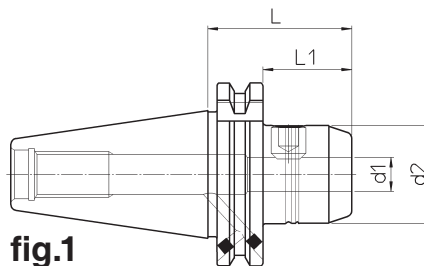
Werkzeugaufnahme
für Weldon

Патроны для инструмента с
креплением Weldon

Wyjście pod Weldon

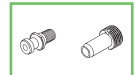
Portautensile
Weldon

WD



DIN	REF.	CODE	d ₁ ^{H5}	d ₂	L	L ₁	kg	fig.
50	DIN69871-AD+B50 WD06.63	71DIN-B50WD0606	6	23	63	44	2.3	1
	DIN69871-AD+B50 WD06.110	71DIN-B50WD0611			110	91	2.4	
	DIN69871-AD+B50 WD06.160	71DIN-B50WD0616			160	141	2.5	
	DIN69871-AD+B50 WD08.63	71DIN-B50WD0806	8	26	63	44	2.4	
	DIN69871-AD+B50 WD08.110	71DIN-B50WD0811			110	91	2.5	
	DIN69871-AD+B50 WD08.160	71DIN-B50WD0816			160	141	2.7	
	DIN69871-AD+B50 WD10.63	71DIN-B50WD1006	10	30	63	44	2.5	
	DIN69871-AD+B50 WD10.110	71DIN-B50WD1011			110	91	2.7	
	DIN69871-AD+B50 WD10.160	71DIN-B50WD1016			160	141	2.9	
	DIN69871-AD+B50 WD12.63	71DIN-B50WD1206	12	34	63	44	2.6	
	DIN69871-AD+B50 WD12.110	71DIN-B50WD1211			110	91	2.8	
	DIN69871-AD+B50 WD12.160	71DIN-B50WD1216			160	141	3.2	
	DIN69871-AD+B50 WD14.63	71DIN-B50WD1406	14	38	63	44	2.7	
	DIN69871-AD+B50 WD14.110	71DIN-B50WD1411			110	91	3	
	DIN69871-AD+B50 WD16.63	71DIN-B50WD1606	16	42	63	44	2.8	
	DIN69871-AD+B50 WD16.110	71DIN-B50WD1611			110	91	3.2	
	DIN69871-AD+B50 WD16.160	71DIN-B50WD1616			160	141	3.7	
	DIN69871-AD+B50 WD18.63	71DIN-B50WD1806	18	46	63	44	2.9	
	DIN69871-AD+B50 WD18.110	71DIN-B50WD1811			110	91	3.4	
	DIN69871-AD+B50 WD20.63	71DIN-B50WD2006	20	50	63	44	3	
	DIN69871-AD+B50 WD20.110	71DIN-B50WD2011			110	91	3.6	
	DIN69871-AD+B50 WD20.160	71DIN-B50WD2016			160	141	4.2	
	DIN69871-AD+B50 WD25.80	71DIN-B50WD2508	25	63	80	61	3.5	
	DIN69871-AD+B50 WD25.110	71DIN-B50WD2511			110	91	4.1	
DIN69871-AD+B50 WD25.160	71DIN-B50WD2516	160			141	5.1		
DIN69871-AD+B50 WD32.100	71DIN-B50WD3210	32	70	100	81	4.6		
DIN69871-AD+B50 WD32.160	71DIN-B50WD3216			160	141	6		
DIN69871-AD+B50 WD40.100	71DIN-B50WD4010	40	80	100	81	4.8		
DIN69871-AD+B50 WD40.160	71DIN-B50WD4016			160	141	6.5		

p. 228



p. 240



p. 270



Mill holder

Werkzeugaufnahme
für Aufsteckfräser

Оправки для насадных
фрез

Wyjście pod głowice
frezarskie

Portafresa

PF

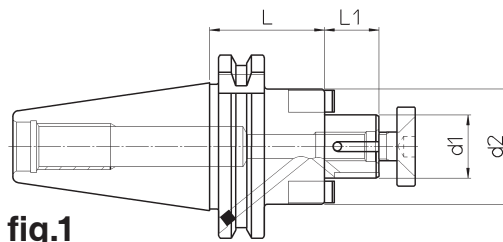


fig.1

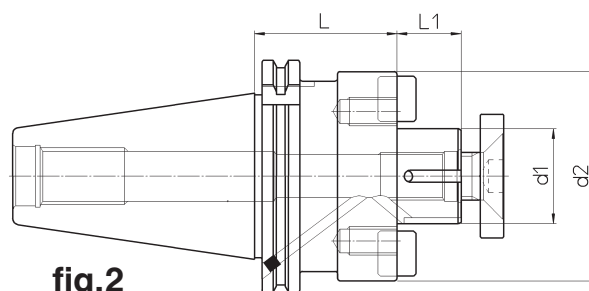
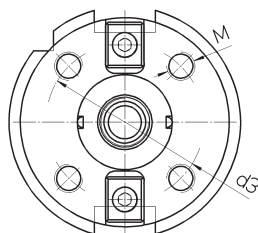


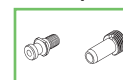
fig.2

DIN	REF.	CODE	d ₁	d ₂	d ₃	M	L	L ₁	kg	fig.
40	DIN69871-AD+B40 PF16.35	71DIN-B40PF1603	16	32	-	-	35	17	0.9	1
	DIN69871-AD+B40 PF16.110	71DIN-B40PF1611					110		1.3	
	DIN69871-AD+B40 PF16.160	71DIN-B40PF1616					160		1.9	
	DIN69871-AD+B40 PF22.40	71DIN-B40PF2204	22	40			40	1		
	DIN69871-AD+B40 PF22.110	71DIN-B40PF2211					110	19	1.7	
	DIN69871-AD+B40 PF22.160	71DIN-B40PF2216					160	2.1		
	DIN69871-AD+B40 PF27.45	71DIN-B40PF2704	27	50			45	1.2		
	DIN69871-AD+B40 PF27.110	71DIN-B40PF2711					110	21	2.2	
	DIN69871-AD+B40 PF27.160	71DIN-B40PF2716					160	2.9		
	DIN69871-AD+B40 PF32.50	71DIN-B40PF3205	32	60			50	1.7		
	DIN69871-AD+B40 PF32.110	71DIN-B40PF3211					110	24	3	
DIN69871-AD+B40 PF40.55	71DIN-B40PF4005	40	70	55	27	2.1				
50	DIN69871-AD+B50 PF16.40	71DIN-B50PF1604	16	32	40	2.4				
	DIN69871-AD+B50 PF16.110	71DIN-B50PF1611			110	17	2.8			
	DIN69871-AD+B50 PF16.160	71DIN-B50PF1616			160	3.1				
	DIN69871-AD+B50 PF22.45	71DIN-B50PF2204	22	40	45	2.6				
	DIN69871-AD+B50 PF22.110	71DIN-B50PF2211			110	19	3.2			
	DIN69871-AD+B50 PF22.160	71DIN-B50PF2216			160	3.7				
	DIN69871-AD+B50 PF27.50	71DIN-B50PF2705	27	50	50	2.7				
	DIN69871-AD+B50 PF27.110	71DIN-B50PF2711			110	21	3.6			
	DIN69871-AD+B50 PF27.160	71DIN-B50PF2716			160	4.4				
	DIN69871-AD+B50 PF32.55	71DIN-B50PF3205	32	60	55	24	3.2			
	DIN69871-AD+B50 PF32.120	71DIN-B50PF3212			120	5.5				
	DIN69871-AD+B50 PF40.60	71DIN-B50PF4006	40	88	66.7	M12	60	27	4.3	2
	DIN69871-AD+B50 PF40.120	71DIN-B50PF4012					120	7.1		
	DIN69871-AD+B50 PF60.70	71DIN-B50PF6007	60	128.5	101.6	M16	70	40	6.6	

p. 270

p. 240

p. 228



DIN 69871 AD+B

CM - DIN 228 AB



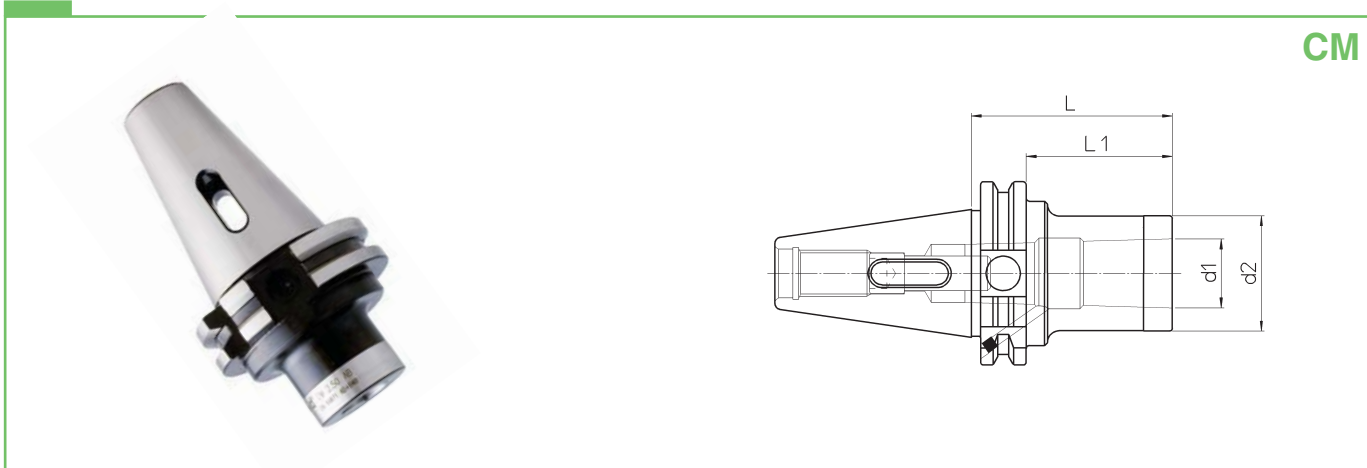
Morse taper
toolholder

Werkzeugaufnahme
für Morsekegel

Державки для инструмента
с конусом Морзе

Wyjście pod stożki
Morse'a

Portautensile cono
morse



CM

DIN	REF.	CODE	MORSE	d ₁	d ₂	L	L ₁	kg
40	DIN69871-AD+B40 CM2.50 A-B	71DIN-B40CMB205	2	17.780	32	50	31	1
	DIN69871-AD+B40 CM2.125 A-B	71DIN-B40CMB212				125	106	1.4
	DIN69871-AD+B40 CM3.70 A-B	71DIN-B40CMB307	3	23.825	40	51	1.1	
	DIN69871-AD+B40 CM3.140 A-B	71DIN-B40CMB314			42	140	121	1.5
50	DIN69871-AD+B50 CM2.60 A-B	71DIN-B50CMB206	2	17.780	32	60	41	2.6
	DIN69871-AD+B50 CM2.125 A-B	71DIN-B50CMB212				125	106	2.8
	DIN69871-AD+B50 CM3.60 A-B	71DIN-B50CMB306	3	23.825	40	41	2.7	
	DIN69871-AD+B50 CM3.140 A-B	71DIN-B50CMB314			42	140	121	3.2
	DIN69871-AD+B50 CM4.80 A-B	71DIN-B50CMB408	4	31.267	48	80	61	2.9

DIN 69871 A

MS

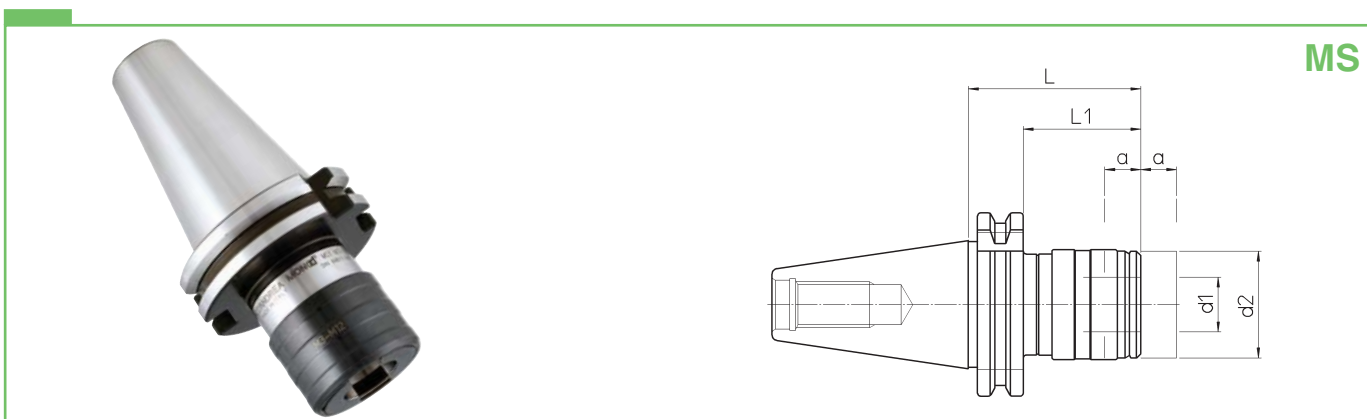
Tapping toolholder

Aufnahme mit
Gewindeschneidschnellwechselfutter

Патроны
резьбонарезные

Oprawki do
gwintowania z
kompensacją osiową

Portautensile
maschiatore



MS

DIN	REF.	CODE	d ₁	d ₂	L	L ₁	a	kg
40	DIN69871-A40 MS1 M3-12	71DIN-A40M10312	19	36	60	40.9	7.5	0.9
	DIN69871-A40 MS2 M8-20	71DIN-A40M20820	31	53	98	78.9	12.5	1.3
50	DIN69871-A50 MS1 M3-12	71DIN-A50M10312	19	38	62	42.9	7.5	2.8
	DIN69871-A50 MS2 M8-20	71DIN-A50M20820	31	53	84	64.9	12.5	3.1
	DIN69871-A50 MS3 M14-33	71DIN-A50M31433	48	78	139	119.9	20	4.3

p. 228

p. 234-235

p. 270

